



2021

BY THE NUMBERS



LANDSCAPE ARCHITECTURE FOUNDATION

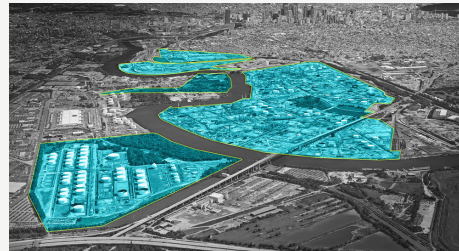
6 participants in the LAF Fellowship for Innovation and Leadership wrapped up their projects on climate change, justice, and inclusion.

3,000+ participants in the GND Superstudio from 39 states and 10 countries

\$385,500 awarded through LAF scholarships, research, and leadership programs



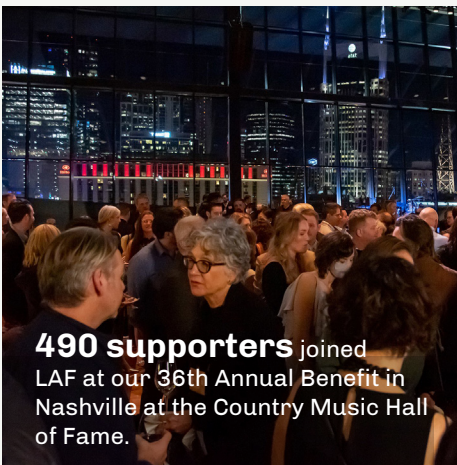
Karen A. Phillips, FASLA, received the 2021 LAF Medal and The Mayors' Institute on City Design received the Founders' Award



\$130,500 awarded to 21 outstanding students through 15 scholarships

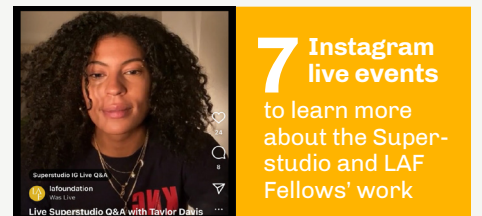
More than 600 people learned about landscape performance through workshops, webinars, and virtual sessions.

670 Superstudio submissions to translate the goals of the Green New Deal into design and planning projects and archived on JSTOR



490 supporters joined LAF at our 36th Annual Benefit in Nashville at the Country Music Hall of Fame.

\$25,000 LAF Research Grant in Honor of Deb Mitchell awarded to Developing a Disaster Adaptation Framework for Rural Resilience



7 Instagram live events to learn more about the Superstudio and LAF Fellows' work

LAF continued strategic efforts to advance diversity, equity, and inclusion in the discipline, including a survey of over **250 participants** to increase Black faculty.

For COP26 LAF was one of **60+** built environment firms and organizations to sign a Communiqué demonstrating commitment to keep warming below 1.5°C and demanding that governments do the same.



87 student leaders recognized as LAF Olmsted Scholars with \$64,000 awarded to 2 national winners and 6 finalists

727 donors invested in LAF, with **118** recognized in the Leadership Circle.

10 case studies of exemplary landscapes with quantified benefits



LAF and partners used the Superstudio as a launchpad for a national conversation about policy and design which will culminate in a summit in DC in April 2022.

LAF's Leadership Circle recognizes individuals and organizations who contribute to LAF's Annual Fund. Their investments complement event and program sponsorships to support LAF's research, scholarships, and leadership initiatives.

Special thanks to these major supporters whose substantial cumulative investment and thought leadership are instrumental in the successful delivery of LAF's annual programs: **BrightView, Design Workshop, EDSA, IRONSMITH, Landscape Forms, Landscape Structures, Bill and Kathy Main, OLIN, Sasaki Associates, SiteOne, and SmithGroup, Beth Wehrle.**

BENEFACTOR

Landscape Forms
Bill and Kathy Main
OLIN
Sasaki Associates

PATRON

Burton Landscape Architecture Studio
HOK
IRONSMITH
James Corner Field Operations
Jeanne Lalli
Darwina Neal
Sherry & Brian Ramsay
TBG Partners
Beth Wehrle

ADVOCATE

Natalia Beard
Keith Bowers
BrightView
Jim Burnett
Alexa Bush
Rich Centolella
Po-Sun Chen
Connie Chung
Civitas, Inc.
Keiko Tsuruta Cramer
Glen Dake
Alma Du Solier
Dorothy Faris
GGLO
GGN
Michael Grove
Brian Jencek
Michael Johnson
Elaine Kearney
Lamar Johnson Collaborative
Permaloc
Jacinta McCann & Joe Brown
Emily McCoy
Mikyoungh Kim Design
MITHUN

Signe Nielsen
Scott Neeley
The Office of James Burnett
Perkins+Will
PWP Landscape Architecture
Reed Hilderbrand
Richard Roark
Lucinda Sanders
Margie Simmons
Trinity Simons
SiteOne
Lisa Switkin
W Architecture & Landscape
Architecture
Monte Wilson
Ernie Wong

PARTNER

Andrea Cochran Landscape Architecture
BFS Landscape Architects
Barbara Faga
Fluidity Design Consultants
Future Green Studio
Hargreaves Jones
Hoerr Schaudt Landscape Architects
Henry McNeil
Kate Orff
Sebastian & Associates
Stoss Landscape Urbanism
Studio-MLA

ASSOCIATE

Calvin Abe
Diane Jones Allen
Frank Arentowicz & Sara Nichols
Arterra Landscape Architects
Asakura Robinson
Kofi Boone
Rebecca Bradley
Carmichael Associates
Chip Crawford
Alice Jean Cunningham
Lisa Delplace

Barbara Deutsch
Terrence DeWan
dwg.
Four and One
Kathleen Garcia
Skip Graffam
J. Patrick Graham
Stephanie Grigsby
Gary Hilderbrand
Hart Howerton
William Johnson
Lake | Flato
Marsha Lea
Lee and Associates
Rebecca Leonard & Steven Spears
Livable Cities Studio
Carol Macht
Margaret A. Frank Fund
Mark K. Morrison Landscape
Architecture PC
Dennis McGlade
Michael Vergason Landscape Architects
Moody Graham
Tom Mroz
Alpa Nawre
Norris Design
Office of Cheryl Barton
Lorraine Osmundson
Mary Padua
Stephanie Pankiewicz
Pamela Burton & Company
April Philips
Raymond Jungles, Inc.
Reich Landscape Architecture
The Rolley Foundation
Roberto Rovira
Saratoga Associates
SiteWorks Landscape Architecture
Thomas Succop
Surfacedesign, Inc.
Swift Company LLC
TEN x TEN Studio
William Wenk

Additional in-kind support provided by the American Society of Landscape Architects (ASLA), Land8: landscape architects network, and Landscape Forms



A message from LAF CEO Barbara Deutsch

Thank you to all who supported LAF and our investment in programs, resources, and thought leadership to strengthen the discipline. The Green New Deal Superstudio initiative to give form to broad policy goals attracted unprecedented participation and catalyzed a series of conversations that will culminate in a summit on design, policy, and advocacy on April 9, 2022 here in DC. LAF has also been hard at work on a new program to overcome identified barriers for BIPOC students in their education and entry into practice. With these ambitious plans, we look forward to expanding our collective impact on issues of climate and equity.

A handwritten signature in black ink that reads "Barbara".